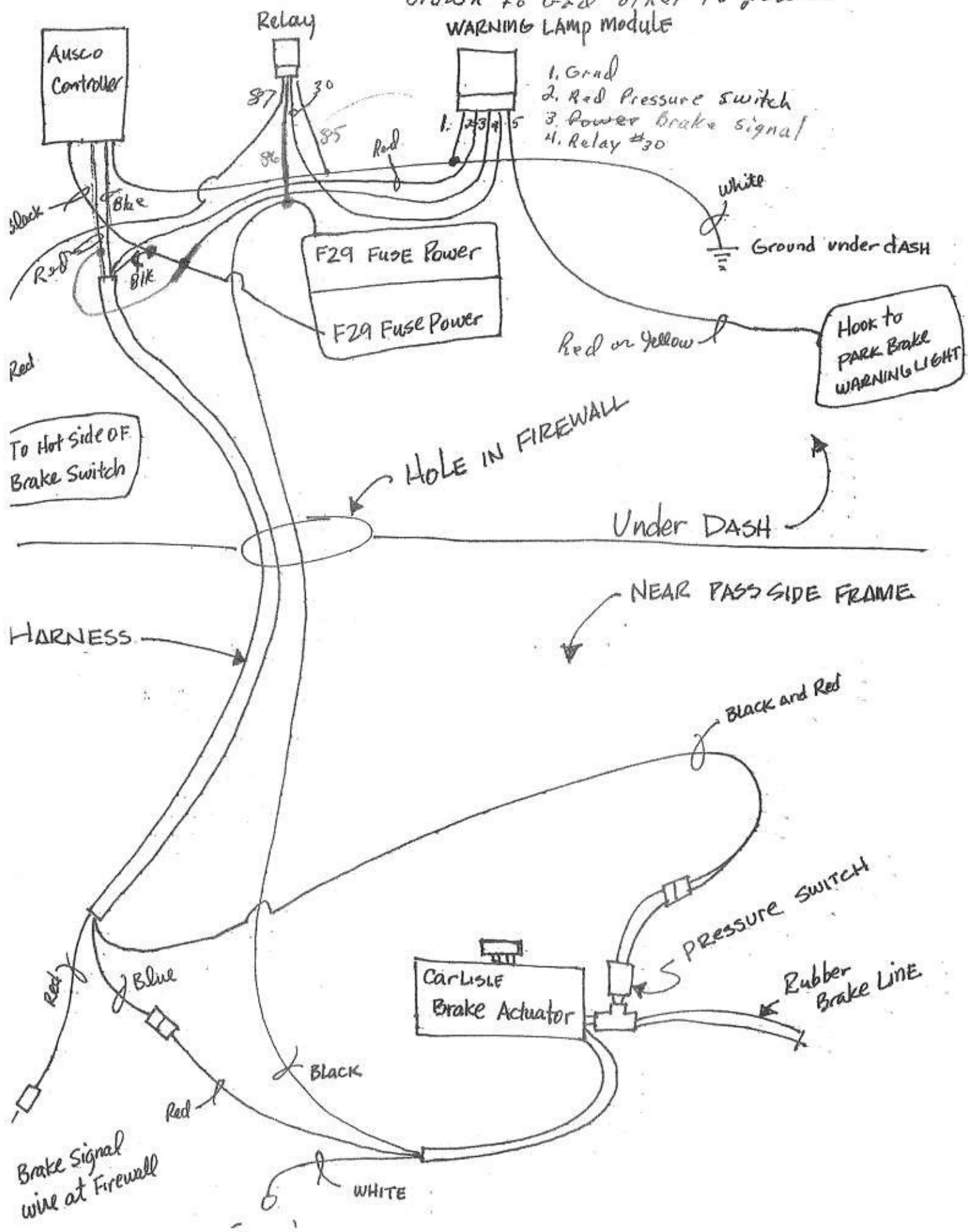
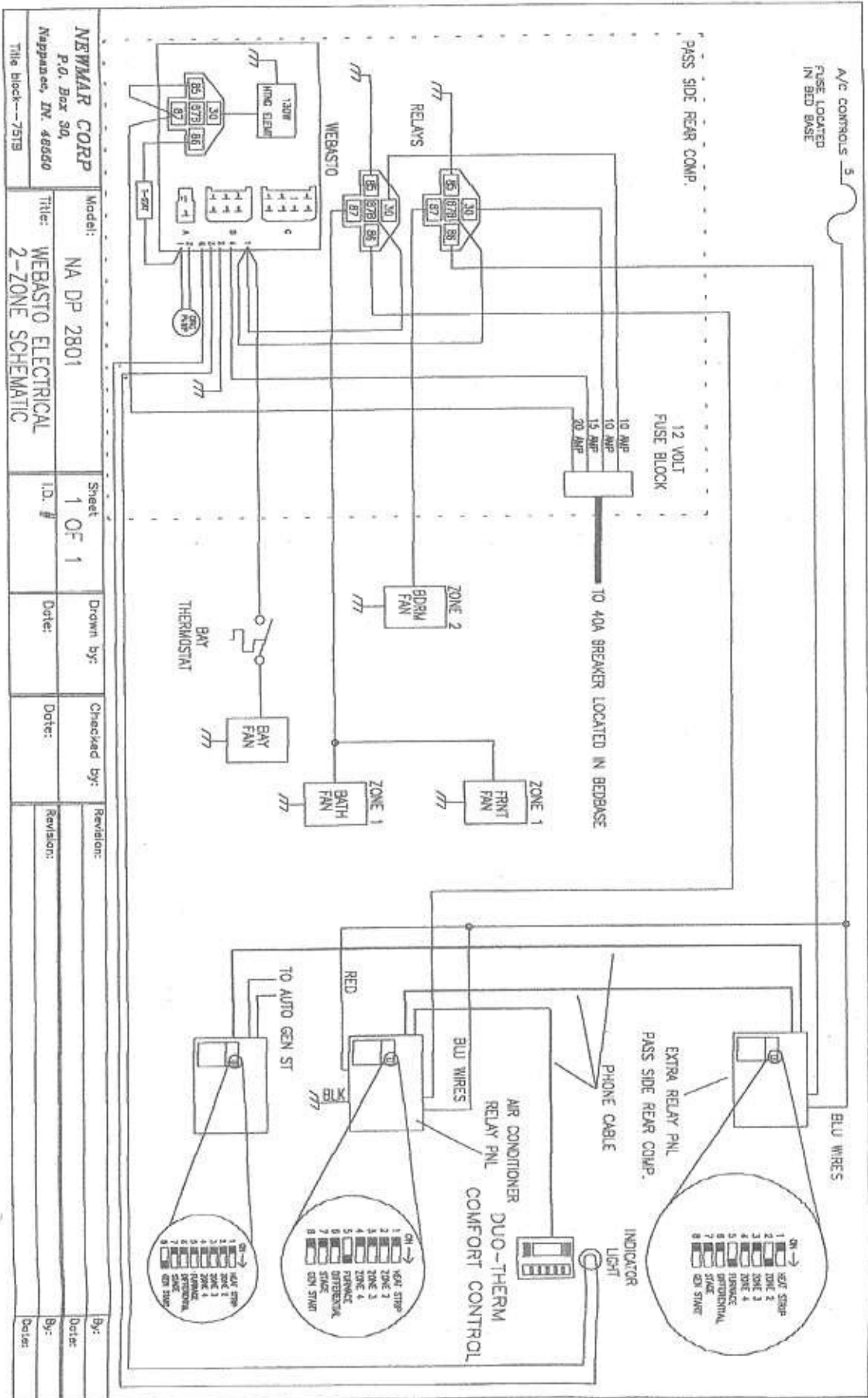


mod 4 - 30 on Relay
 Brown to Gnd other to power
WARNING LAMP module





NEWMAR CORP
P.O. Box 30,
Naperville, IL 60563

Model: **NA DP 2801**
Title: **WEBASTO ELECTRICAL 2-ZONE SCHEMATIC**

Sheet **1 OF 1**
I.D. #

Drawn by:

Checked by:

Revisions:

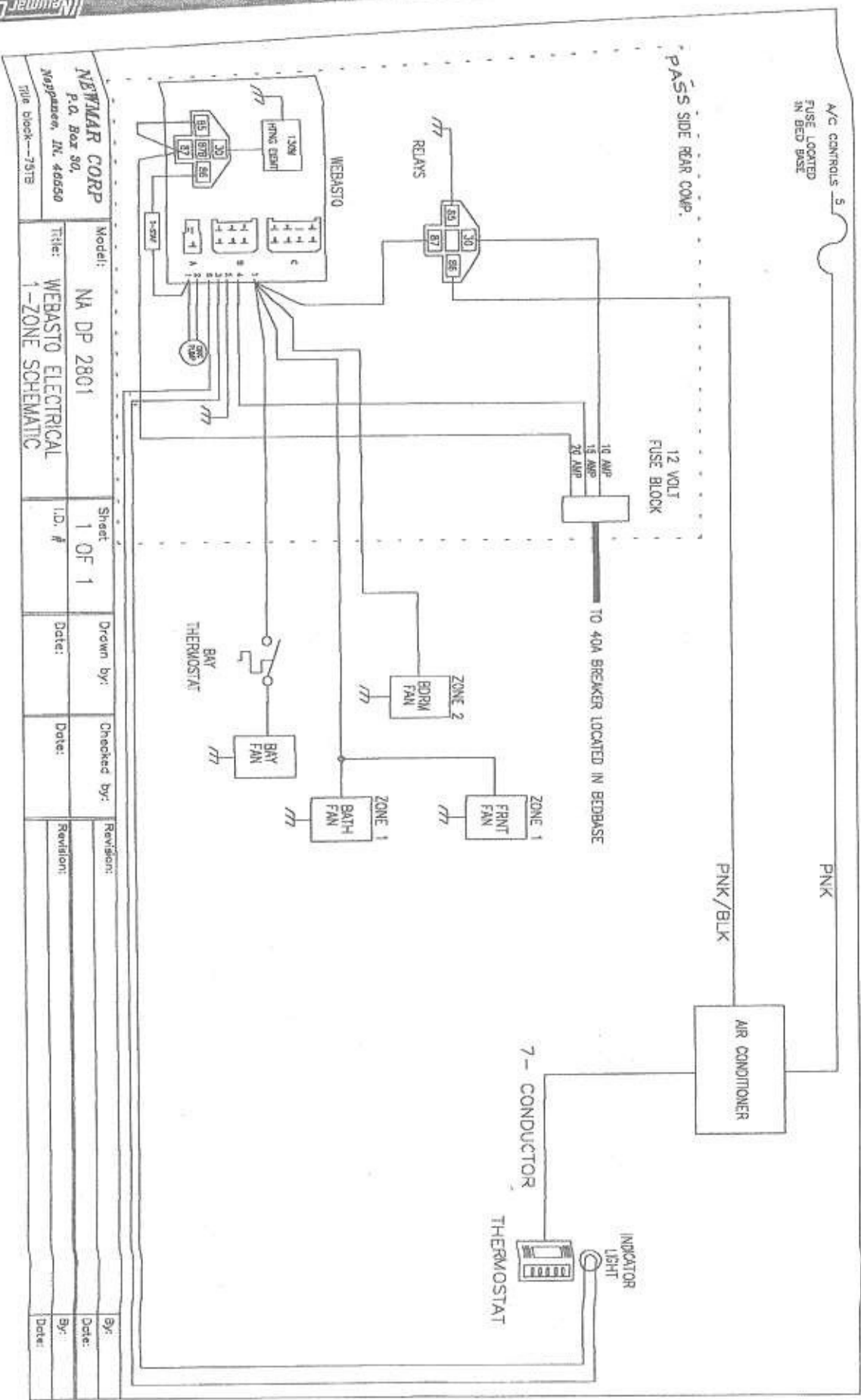
Date:

Date:

Date:

Date:

Date:



NEWMAR CORP
 P.O. Box 50,
 Nepean, IL 46550
 Title block--751B

Model: NA DP 2801
 Title: WEBASTO ELECTRICAL
 1-ZONE SCHEMATIC

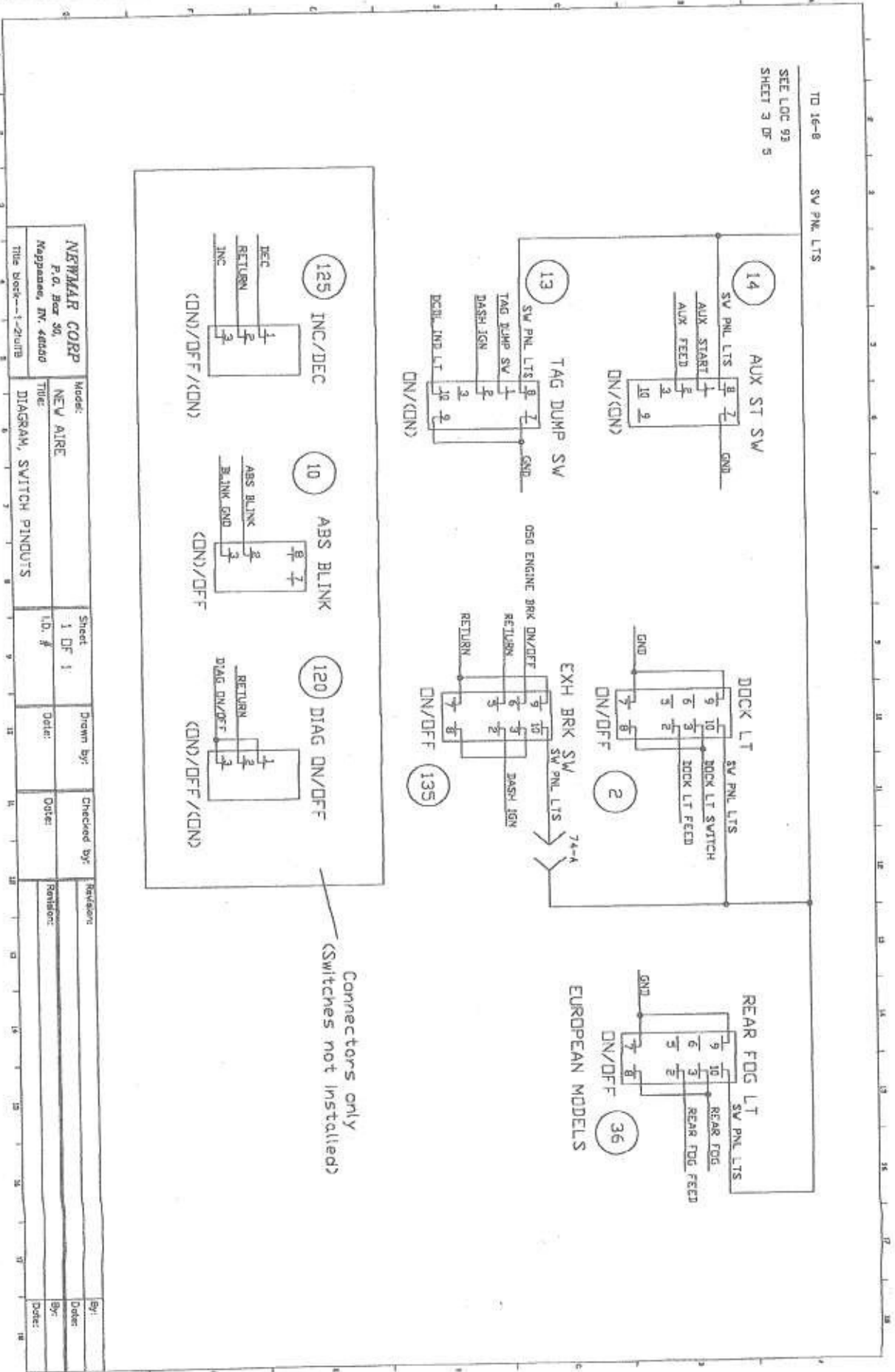
Sheet: 1 OF 1
 I.D. #

Drawn by: Date:

Checked by: Date:

Revision:

By:	Date:



NEWMAR CORP P.O. Box 30, Nagansaw, NY 14860 Title Book--1-2units		Model: NEW AIRE	Sheet: 1 OF 1	Drawn by: Date:	Checked by: Date:	Revisions: Order: By:
Title Book--1-2units		Model: NEW AIRE	Sheet: 1 OF 1	Drawn by: Date:	Checked by: Date:	Revisions: Order: By:
Title Book--1-2units		Model: NEW AIRE	Sheet: 1 OF 1	Drawn by: Date:	Checked by: Date:	Revisions: Order: By:

CHASSIS COMPONENT FINDER

DESCRIPTION	LOCATION ON	SHEET #	ITEM #	PHYSICAL LOCATION
1 ABS ECU	B14	4 OF 5	27	FRONT LEFT CORNER UNDERNEATH
2 ALTERNATOR	B3	4 OF 5	91,90,87,84	DRIVER SIDE FRONT OF ENGINE
3 ALTERNATOR FAIL MODULE	A5	4 OF 5	4	DASH ACCESS PNL
4 A/C CLUTCH	A13	4 OF 5	75	PASS SIDE FRONT OF ENGINE
5 A/C CONDENSER	A13	4 OF 5	42	RIGHT FRONT CORNER UNDERNEATH
6 BI-DIRECTIONAL ISOLATOR CONTROL	F12	4 OF 5	80	REAR WALL BATTERY COMPARTMENT
7 BREAKER, TAG BRAKE	F3	4 OF 5	N/A	PASS SIDE ENGINE BOX WALL
8 CIRCUIT BREAKER, A/C CLUTCH/CONDENSER	E18	5 OF 5	BUSSMAN 1	FIREWALL
9 CIRCUIT BREAKER, DRVR POWER SEAT	B2	5 OF 5	BUSSMAN 2	FIREWALL
10 CIRCUIT BREAKER, PASS POWER SEAT	B1	5 OF 5	BUSSMAN 2	FIREWALL
11 CIRCUIT BREAKER, WIPER	E1	5 OF 5	BUSSMAN 1	FIREWALL
12 CRUISE CONTROL	F9	2 OF 5	130	STEERING COLUMN
13 DASH/CHASSIS INTERFACE	A10	3 OF 5	16	DASH ACCESS PNL
14 DOCK LTS	F13	4 OF 5	48,57	BETWEEN REAR AXLES
15 DRL MODULE	F7	3 OF 5	5	DASH ACCESS PNL
16 ENGINE ECU	E5	1 OF 5	206,224	PASS SIDE MID ENGINE
17 ENGINE HARNESS INTERFACE	C1	3 OF 5	66,67	PASS SIDE REAR ENGINE
18 ENGINE INTERFACE TO ELECTRONIC HARNESS	D4	2 OF 5	201	REAR OF ENGINE
19 FAN CONTROLLER	D3	1 OF 5	208	DRIVER SIDE ENGINE BOX WALL
20 FLASHER, HAZARD	D13	3 OF 5	26	DASH ACCESS PNL
21 FLASHER, TURN	D13	3 OF 5	23	DASH ACCESS PNL
22 FUSE, ABS ECU	E10	5 OF 5	BUSSMAN 1	FIREWALL
23 FUSE, ABS ECU IGN	E6	5 OF 5	BUSSMAN 2	FIREWALL
24 FUSE, ABS LIGHT RELAY	E6	5 OF 5	BUSSMAN 2	FIREWALL
25 FUSE, ABS PUMP	E9	5 OF 5	BUSSMAN 2	FIREWALL
26 FUSE, BACK-UP LTS	E3	5 OF 5	BUSSMAN 1	FIREWALL
27 FUSE, BRAKE LTS	E15	5 OF 5	BUSSMAN 2	FIREWALL
28 FUSE, BRAKE SWITCH	A5	5 OF 5	BUSSMAN 2	FIREWALL
29 FUSE, DASH IGN	E6	5 OF 5	BUSSMAN 2	FIREWALL
30 FUSE, DASH VOLTMETER	E2	5 OF 5	BUSSMAN 1	FIREWALL



CHASSIS COMPONENT FINDER

31	FUSE, DAYTIME DRIVING LIGHTS	E13	5 OF 5	BUSSMAN 1	FIREWALL
32	FUSE, DIAGNOSTIC	C10	1 OF 5	BUSSMAN REAR	ENG BED ACCESS
33	FUSE, DOCK LTS	E1	5 OF 5	BUSSMAN 1	FIREWALL
34	FUSE, ENGINE BATTERY 3-7.5, 2-10	C10	1 OF 5	BUSSMAN REAR	ENG BED ACCESS
35	FUSE, ENGINE IGNITION	C11	1 OF 5	BUSSMAN REAR	ENG BED ACCESS
36	FUSE, EXHAUST BRAKE	C11	1 OF 5	BUSSMAN REAR	ENG BED ACCESS
37	FUSE, FRONT DIAGNOSTIC CONNECTOR	E10	5 OF 5	BUSSMAN 2	FIREWALL
38	FUSE, HAZARD FLASHER	E13	5 OF 5	BUSSMAN 2	FIREWALL
39	FUSE, HEADLIGHT SWITCH POWER	E12	5 OF 5	BUSSMAN 2	FIREWALL
40	FUSE, HORN	E9	5 OF 5	BUSSMAN 1	FIREWALL
41	FUSE, HYDRAULIC FAN	C11	1 OF 5	BUSSMAN REAR	ENG BED ACCESS
42	FUSE, HYDROMAX	D3	4 OF 5	70	PASS SIDE ENGINE BOX WALL
43	FUSE, INSTRUMENT PANEL LTS	A13	5 OF 5	BUSSMAN 1	FIREWALL
44	FUSE, KEY SWITCH	E18	5 OF 5	BUSSMAN 1	FIREWALL
45	FUSE, MARKER LTS	E11	5 OF 5	BUSSMAN 1	FIREWALL
46	FUSE, MARKER SWITCH POWER	E11	5 OF 5	BUSSMAN 1	FIREWALL
47	FUSE, MOISTURE EJECTOR	C11	1 OF 5	BUSSMAN REAR	ENG BED ACCESS
48	FUSE, RADIO	B1	5 OF 5	BUSSMAN 2	FIREWALL
49	FUSE, RADIO/C.B.	B8	3 OF 5	76	PASS SIDE ENGINE BOX WALL
50	FUSE, TAG BRAKE	E14	5 OF 5	BUSSMAN 2	FIREWALL
51	FUSE, TOW LEFT TURN BRAKE	E16	5 OF 5	BUSSMAN 1	FIREWALL
52	FUSE, TOW RIGHT TURN BRAKE	E17	5 OF 5	BUSSMAN 1	FIREWALL
53	FUSE, TRAILER BRAKE CONTROLLER	A2	3 OF 5	43	FIREWALL
54	FUSE, TRANSMISSION BATTERY	C10	1 OF 5	BUSSMAN REAR	ENG BED ACCESS
55	FUSE, TRANSMISSION IGNITION	C11	1 OF 5	BUSSMAN REAR	ENG BED ACCESS
56	FUSE, TURN FLASHER	E7	5 OF 5	BUSSMAN 2	FIREWALL
57	HEADLIGHT INTERFACE	F11	3 OF 5	39	PASS SIDE NEAR HORNS
58	HORNS	E14	4 OF 5	40	RIGHT FRONT CORNER NEAR GEN
59	HYDROMAX MOTOR	D9	4 OF 5	34	LEFT FRONT CORNER UNDERNEATH
60	INSTRUMENT PANEL INTERFACE	F9	3 OF 5	18	DASH ACCESS PNL
61	INSTRUMENT PANEL INTERFACE	A7	4 OF 5	18	DASH ACCESS PNL
62	ISOLATOR RELAY	F13	4 OF 5	79	REAR WALL BATTERY COMPARTMENT
63	NEUTRAL SAFETY/BACK-UP INTERFACE TO ELECTRONIC HARNESS	A15	3 OF 5	73	PASS SIDE REAR ENGINE
64	POWER SEATS	G15	4 OF 5	45,54	

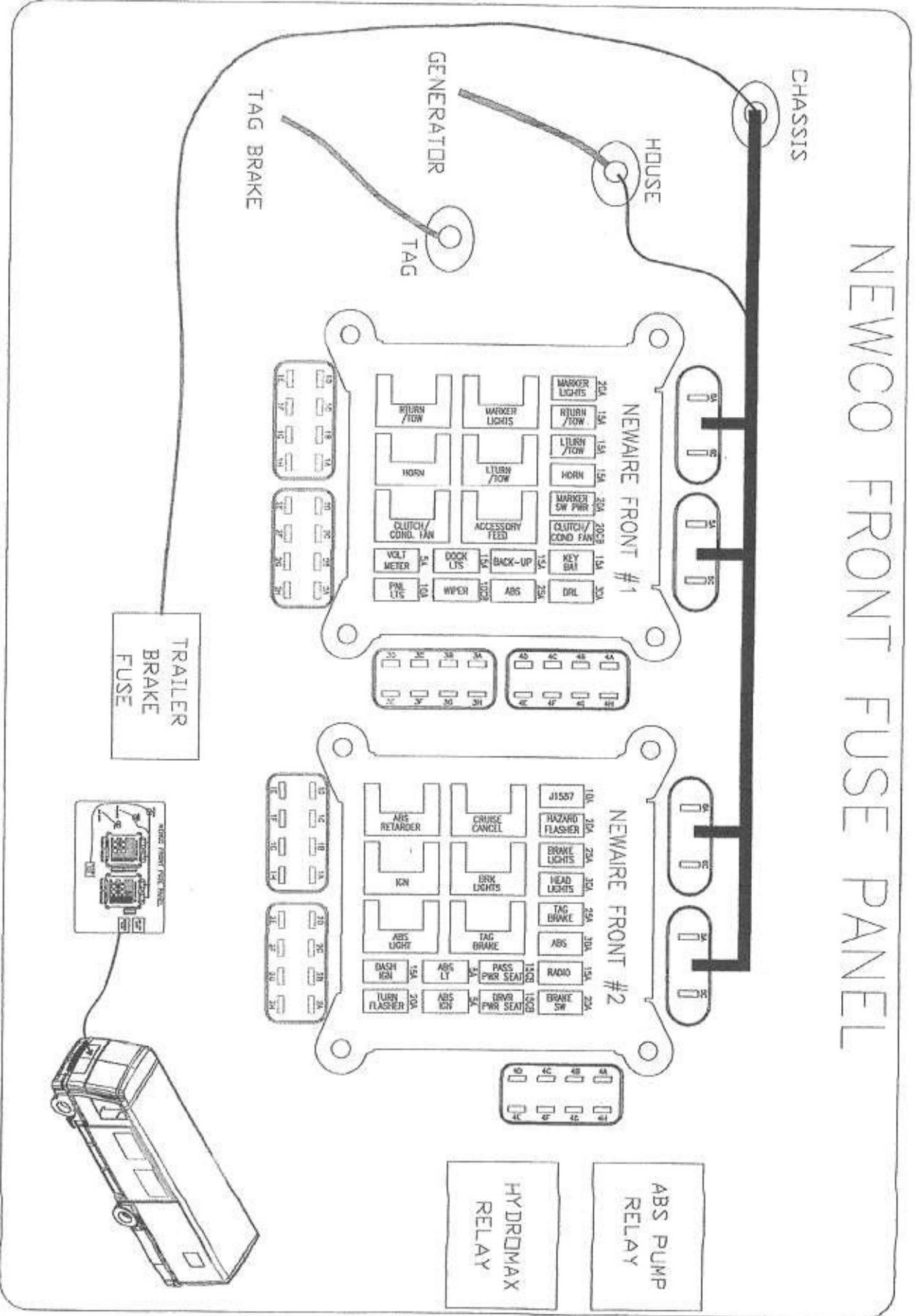
SSIS COMPONENT FINDER

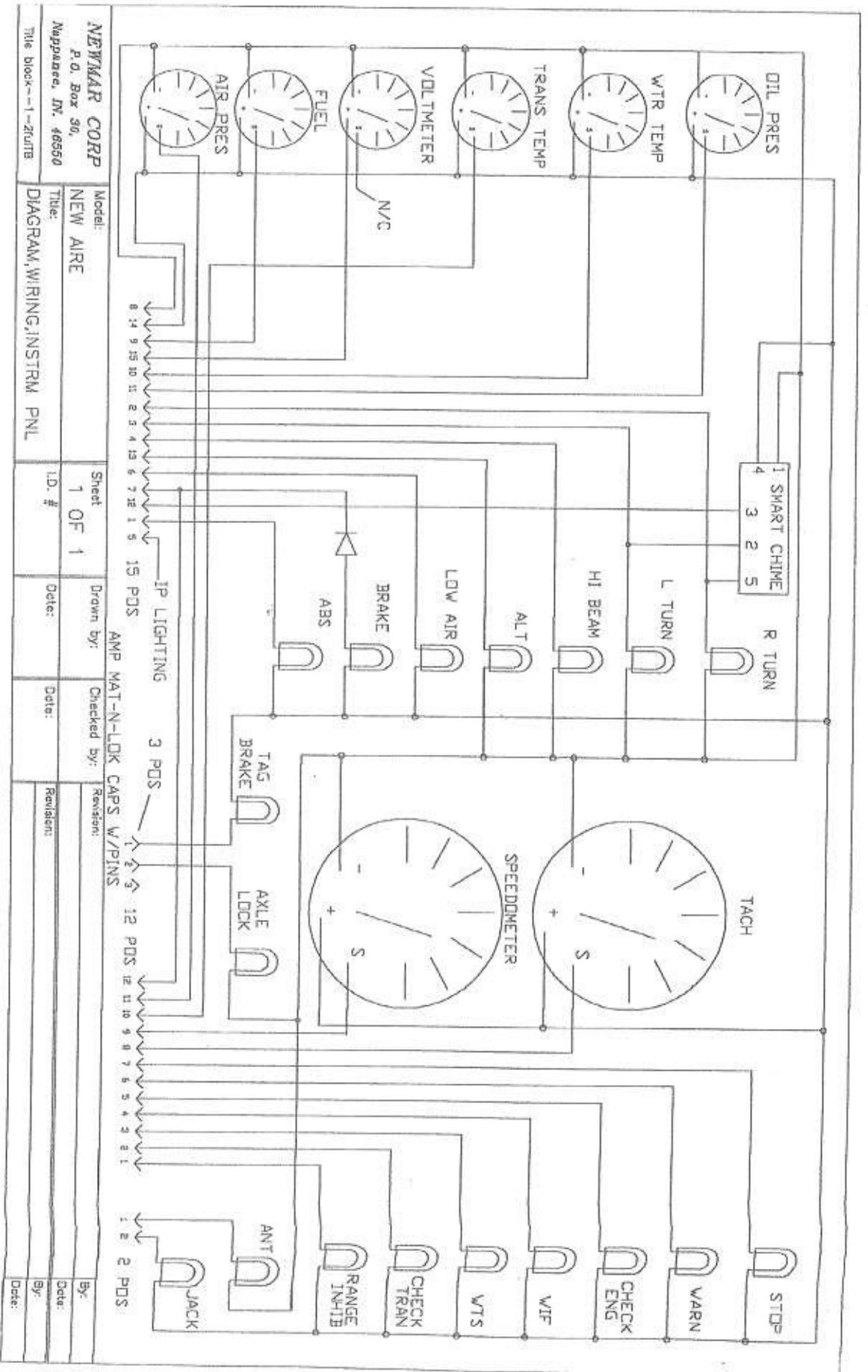
65	REAR DIAGNOSTIC CONNECTOR	D2	1 OF 5	236	PASS SIDE ENGINE BOX WALL
66	RELAY, ABS LT	C7	5 OF 5	BUSSMAN 2	FIREWALL
67	RELAY, ABS PUMP	B11	4 OF 5	25	FIREWALL
68	RELAY, ABS RETARDER	D4	5 OF 5	BUSSMAN 2	FIREWALL
69	RELAY, ACCESSORY	E2	5 OF 5	BUSSMAN 1	FIREWALL
70	RELAY, A/C CLUTCH	C18	5 OF 5	BUSSMAN 1	FIREWALL
71	RELAY, BRAKE LAMP	C15	5 OF 5	BUSSMAN 2	FIREWALL
72	RELAY, CRUISE CANCEL	E15	5 OF 5	BUSSMAN 2	FIREWALL
73	RELAY, CUMMINS ROAD	B11	4 OF 5	1	CENTER DASH PANEL
74	RELAY, ELECTRIC BRAKE	D16	1 OF 5	BUSSMAN REAR	ENG BED ACCESS
75	RELAY, ENGINE EXHAUST BRAKE	B14	1 OF 5	BUSSMAN REAR	ENG BED ACCESS
76	RELAY, EXHAUST BRAKE LAMPS	C16	1 OF 5	BUSSMAN REAR	ENG BED ACCESS
77	RELAY, HI BEAM	F12	3 OF 5	35	NEAR HEADLIGHT SW
78	RELAY, HORN	D4	5 OF 5	BUSSMAN 1	FIREWALL
79	RELAY, HYDROMAX	D8	4 OF 5	24	FIREWALL
80	RELAY, IGN	B13	1 OF 5	BUSSMAN REAR	ENG BED ACCESS
81	RELAY, IGNITION	E7	5 OF 5	BUSSMAN 2	FIREWALL
82	RELAY, ISSPRO SPEED	E4	3 OF 5	31	DASH ACCESS PNL
83	RELAY, MARKER LTS	C11	5 OF 5	BUSSMAN 1	FIREWALL
84	RELAY, MOISTURE EJECTOR	D13	1 OF 5	BUSSMAN REAR	ENG BED ACCESS
85	RELAY, TAG BRAKE	C14	5 OF 5	BUSSMAN 2	FIREWALL
86	RELAY, TAG BRAKE (POWER FEED)	F8	4 OF 5	94	PASS SIDE ENGINE BOX WALL
87	RELAY, TOW RIGHT TURN/BRAKE	C17	5 OF 5	BUSSMAN 1	FIREWALL
88	RELAY, TOW LEFT TURN/BRAKE	C16	5 OF 5	BUSSMAN 1	FIREWALL
89	RELAY, TRANSMISSION EXHAUST BRAKE	C14	1 OF 5	BUSSMAN REAR	ENG BED ACCESS
90	SENDER AIR PRESSURE	A7	2 OF 5	114	DRIVER SIDE FRONT OF GENERATOR
91	SENDER, FUEL	A9	4 OF 5	51	PASS SIDE TOP OF FUEL TANK
92	SENDER, OIL	B9	4 OF 5	81	PASS SIDE MIDDLE OF ENGINE
93	SENDER, WATER TEMP	B9	4 OF 5	78	DRIVER SIDE TOP FRONT ENGINE
94	STARTER SOLENOID	A13	3 OF 5	69	PASS SIDE ENGINE BOX WALL
95	SWITCH TAG DUMP	D3	3 OF 5	13	LEFT SIDE OF STEERING COLUMN
96	SWITCH, AUXILIARY START	F15	4 OF 5	14	LEFT SIDE OF STEERING COLUMN
97	SWITCH, BRAKE	D11	4 OF 5	21	CENTER OF FORWARD OF STEERING
98	SWITCH, DCDDL SENSOR	F5	3 OF 5	77	LEFT SIDE OF STEERING COLUMN
99	SWITCH, DIAGNOSTIC	D14	2 OF 5	120	DASH ACCESS PNL



CHASSIS COMPONENT FINDER

100	SWITCH, DOCK LITS	F15	4 OF 5	2	CENTER DASH
101	SWITCH, HEADLIGHT	F15	3 OF 5	6	LEFT SIDE OF STEERING COLUMN
102	SWITCH, HI/LO BEAM	F13	3 OF 5	12	STEERING COLUMN
103	SWITCH, HORN	E13	4 OF 5	9	STEERING COLUMN
104	SWITCH, HYDROMAX FLOW	D5	4 OF 5	33	LEFT FRONT CORNER UNDERNEATH
105	SWITCH, HYDROMAX MALFUNCTION	D6	4 OF 5	30	LEFT FRONT CORNER UNDERNEATH
106	SWITCH, INC/DEC	D15	2 OF 5	125	DASH ACCESS PNL
107	SWITCH, ISSPRO SPEED	E3	3 OF 5	32	DASH ACCESS PNL
108	SWITCH, KEY	B15	3 OF 5	15	RIGHT SIDE OF STEERING COLUMN
109	SWITCH, LOW AIR	A12	3 OF 5	22	DRIVER SIDE FRONT OF GENERATOR
110	SWITCH, PAC BRAKE	D10	2 OF 5	135	LEFT SIDE OF STEERING COLUMN
111	SWITCH, PARK BRAKE	C5	4 OF 5	3	LEFT SIDE OF STEERING COLUMN
112	SWITCH, TURN SIGNAL	D15	3 OF 5	9	STEERING COLUMN
113	TAG BRAKE ELECTRAULIC UNIT	F7	4 OF 5	95	RIGHT FRONT CORNER UNDERNEATH
114	TAG BRAKE CONTROL	F7	4 OF 5	94	DASH ACCESS PNL
115	TAG BRAKE LAMP MODULE	F7	4 OF 5	20	DASH ACCESS PNL
116	TAIL LIGHT INTERFACE	A7	3 OF 5	93	REAR BUMPER
117	THROTTLE PEDAL	E7	2 OF 5	110,112	RIGHT SIDE OF STEERING COLUMN
118	TOW/PLUG	A5	3 OF 5	96	REAR BUMPER
119	TRAILER BRAKE CONTROLLER PIGTAIL	A3	3 OF 5	46	DASH ACCESS PNL
120	TRANSMISSION ECU	B5	1 OF 5	215,216	REAR SIDE ENGINE BOX WALL
121	VACUUM PUMP	D9	4 OF 5	41	RIGHT FRONT CORNER UNDERNEATH
122	VALVES, MOISTURE EJECTOR	E1	3 OF 5	63	BOTTOM AIR TANK
123	VALVES, PAC BRAKE	F1	3 OF 5	60	PASS SIDE REAR OF ENGINE
124	VALVES, TAG & DCDL	F3	3 OF 5	64,65,68	BETWEEN REAR AXLES
125	WIPER POWER CONNECTOR	F16	4 OF 5	11	DASH ACCESS PNL





NEWMAR CORP
 P.O. Box 90,
 Nepean, IN, 46550

Model: **NEW AIRE**
 Title: **DIAGRAM, WIRING, INSTRM PNL**

Sheet **1 OF 1**
 I.D. #

Drawn by: **AMP MAT-N-LOK**
 Date:

Checked by: **CAPS W/P/INS**
 Date:

Revision: **3 POS**

Revision: **12 POS**

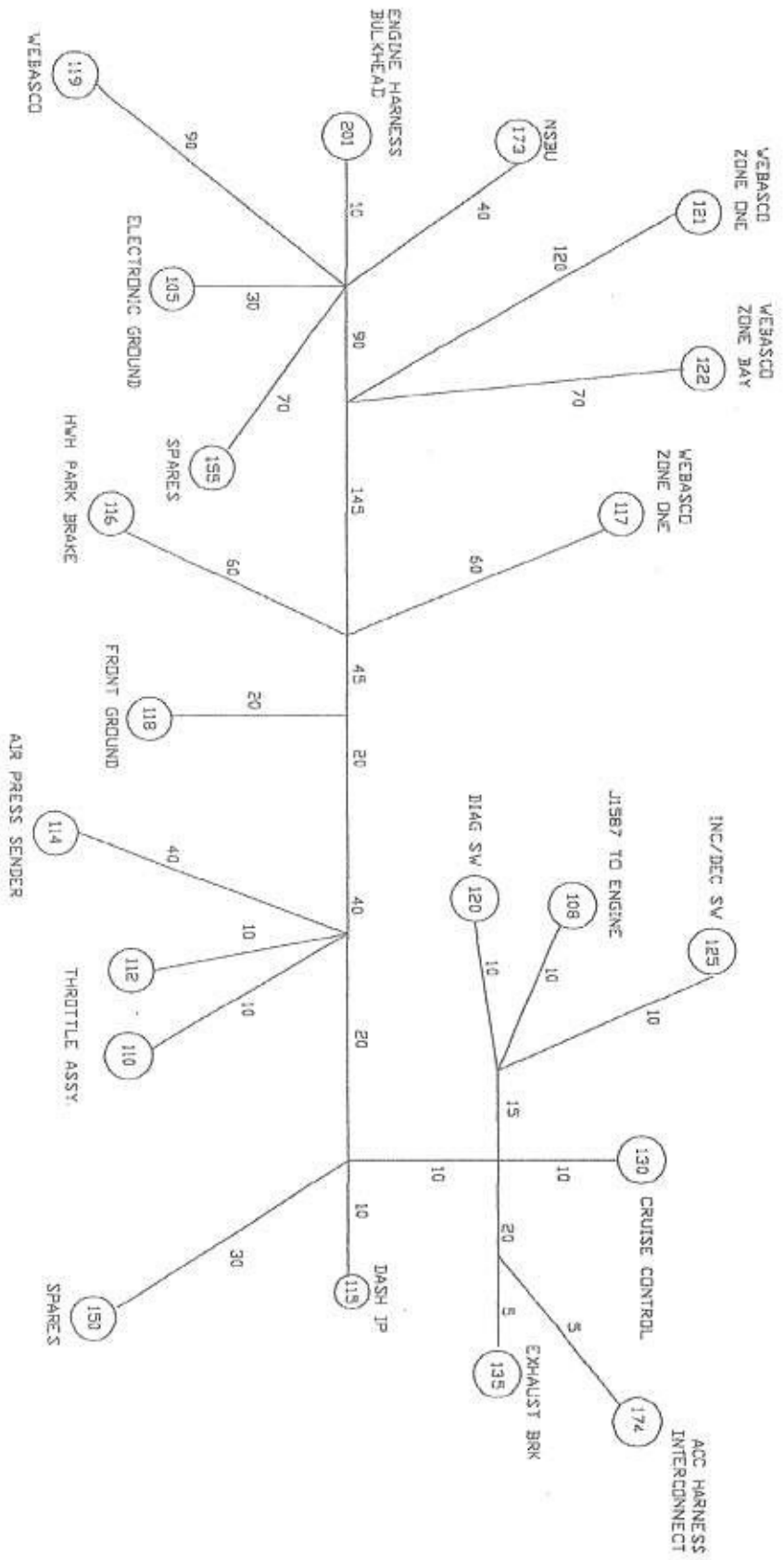
Revision: **12 POS**

Revision: **12 POS**

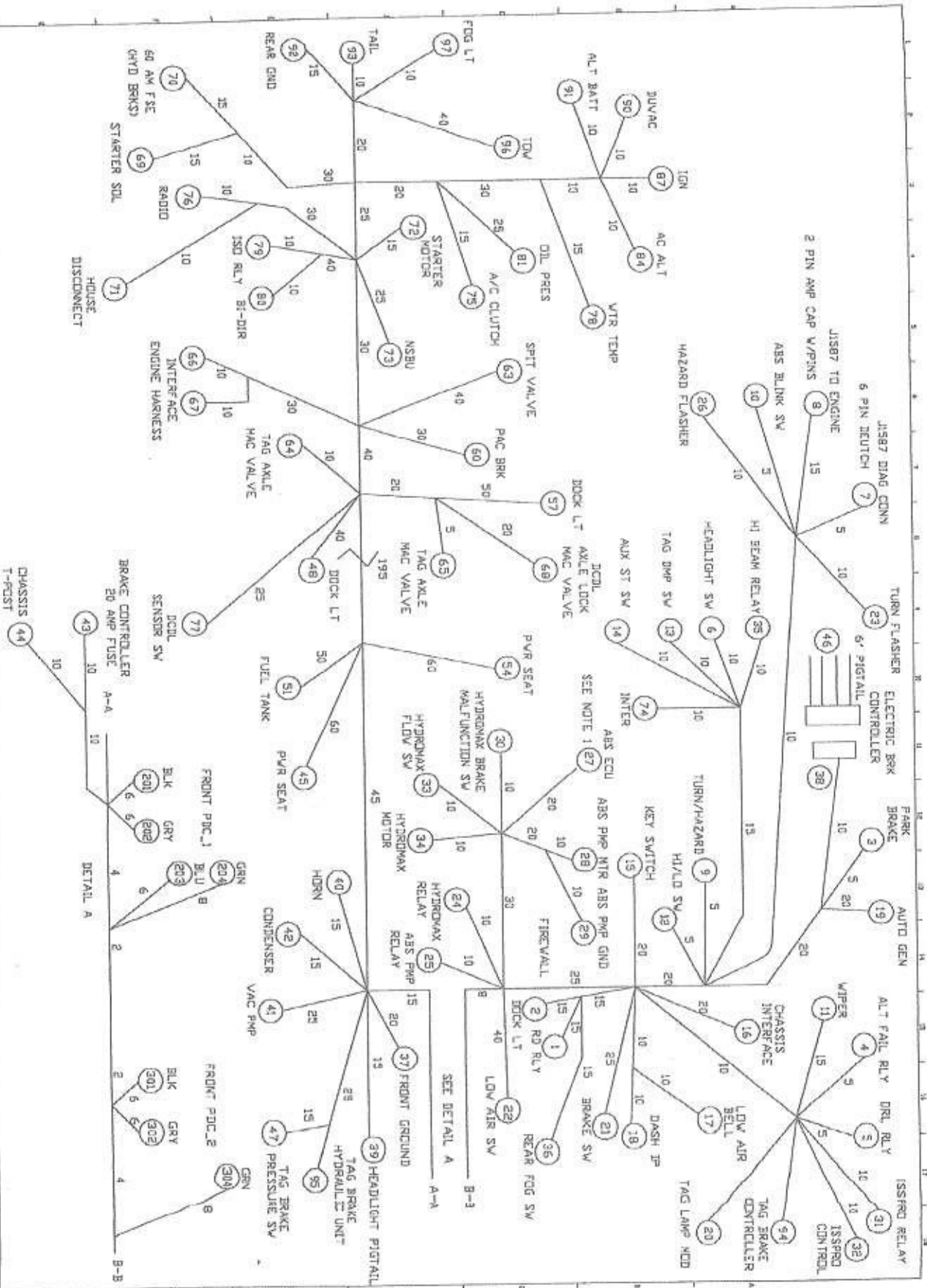
By: **AMP MAT-N-LOK**
 Date: **12 POS**

By: **AMP MAT-N-LOK**
 Date: **12 POS**

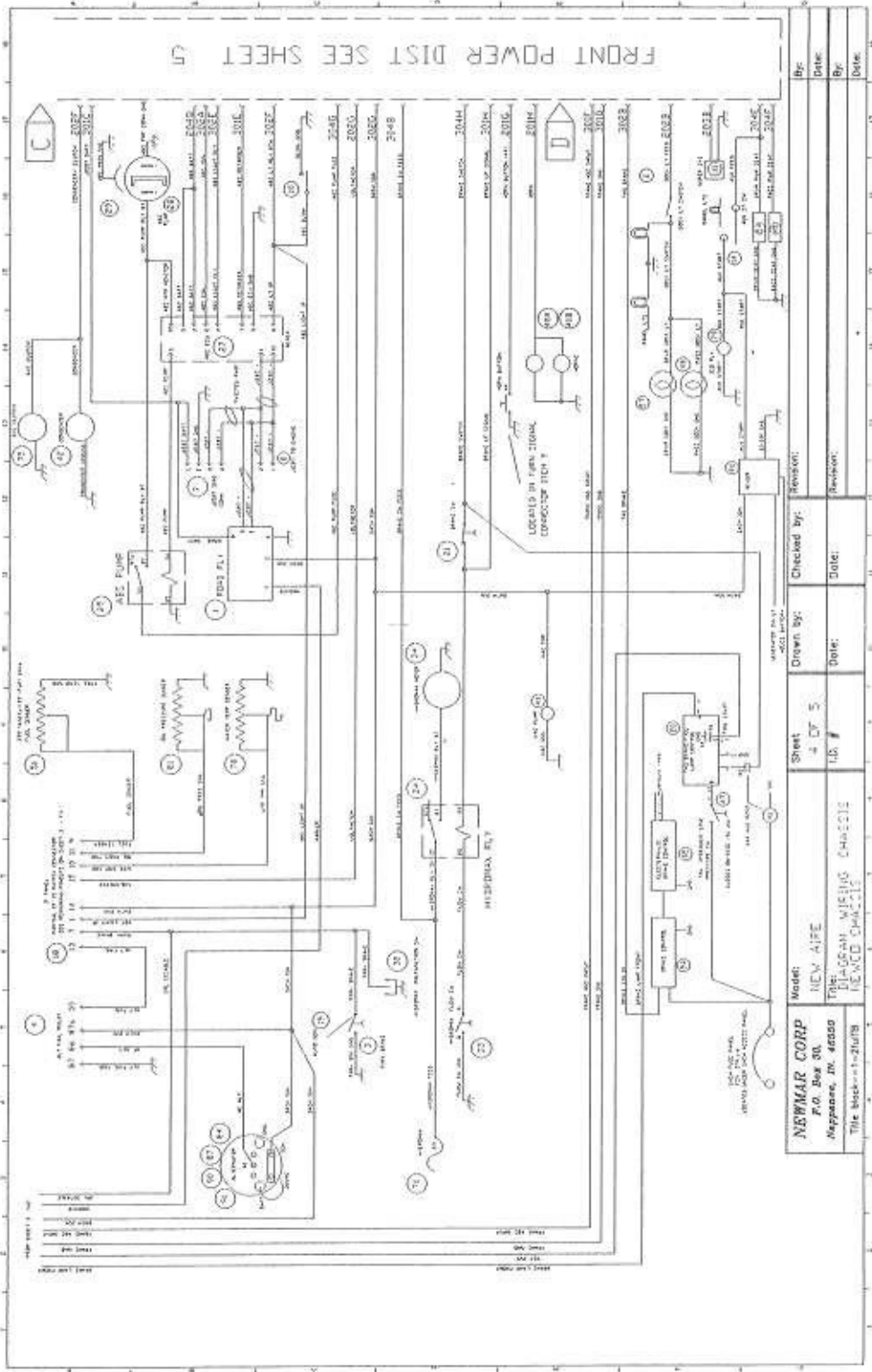
Title block--1--Zrurtb



NEWAIR CORP P.O. Box 30, Naperville, IL 60563 The Bickel-1-Drive		Model: NEW AIRE	Sheet: 1 OF 1	Drawn by:	Checked by:	Revision:	By:
THE DIAGRAM, HARNESS, ELECTRONIC NEWCO CHASSIS		I.D. #	Date:	Date:	Date:	Revision:	Date:
							Dealer



NEWAIR CORP		Model:	NEW AIR	Sheet:	1 OF 1	Drawn By:		Checked By:		Revision:		By:	
P.O. Box 20, Naperville, IL 60563		Title:	DIAGRAM, HARNESS, ACCESSORY	ID. #		Date:		Date:		Revision:		Date:	
Title block—1—2/1/18													



NEWMAR CORP P.O. Box 90 Neenah, WI 54956 Title: 14-50-1-210/03		Model: NEW AIR Part: 4 DT 5 Fig: DIAGRAM WIRING CHARTS U.S. #	Drawn by: REVISION Date:	Checked by: REVISION Date:	By: _____ Date: _____
--	--	---	------------------------------------	--------------------------------------	--------------------------