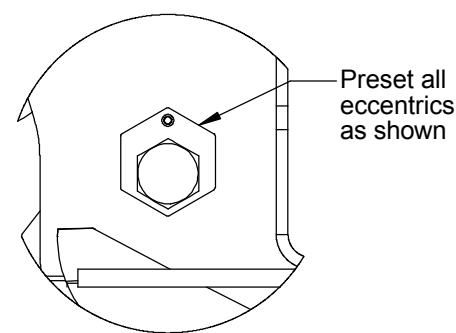
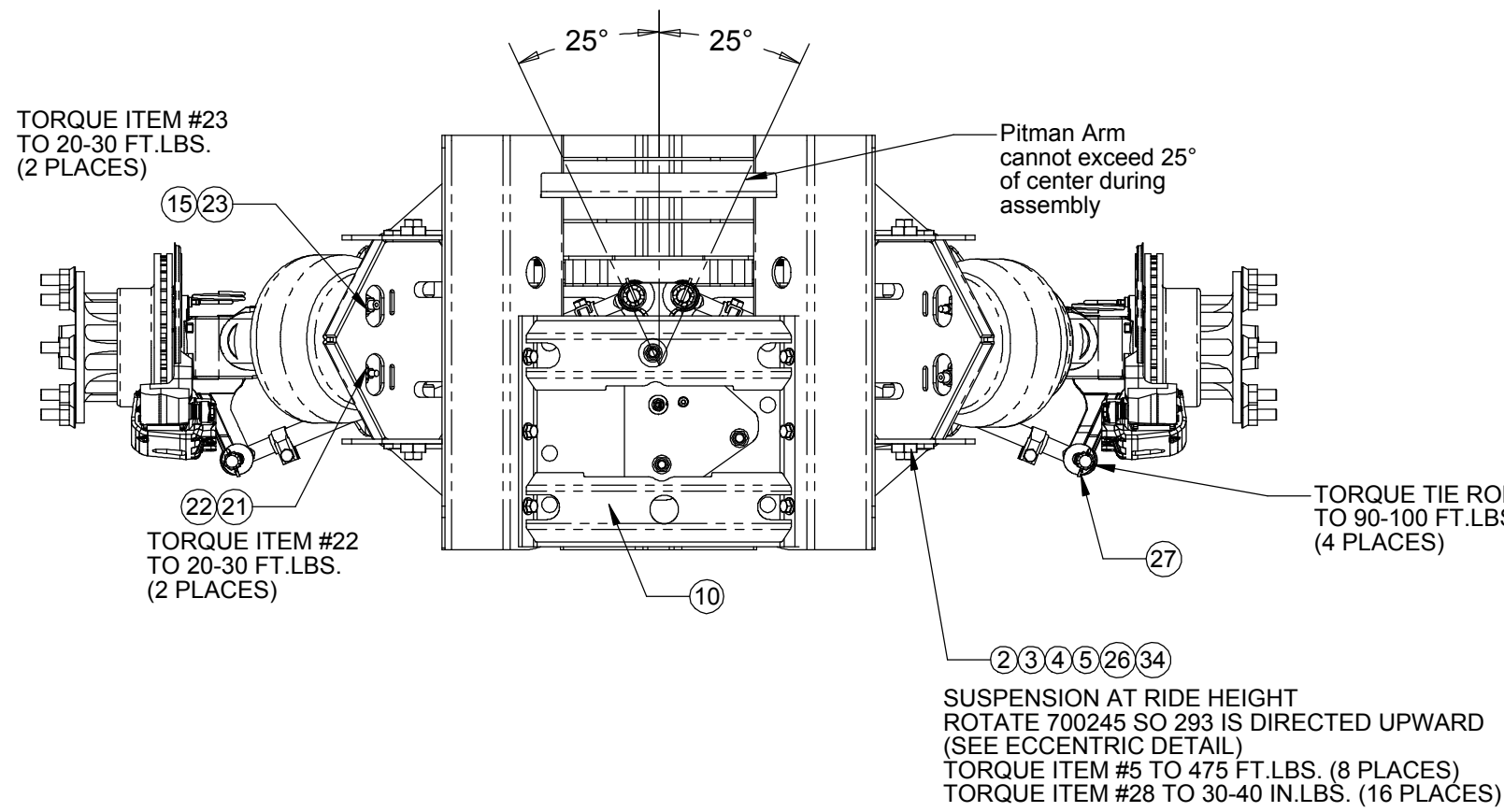
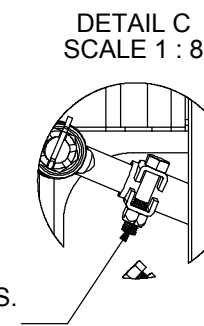
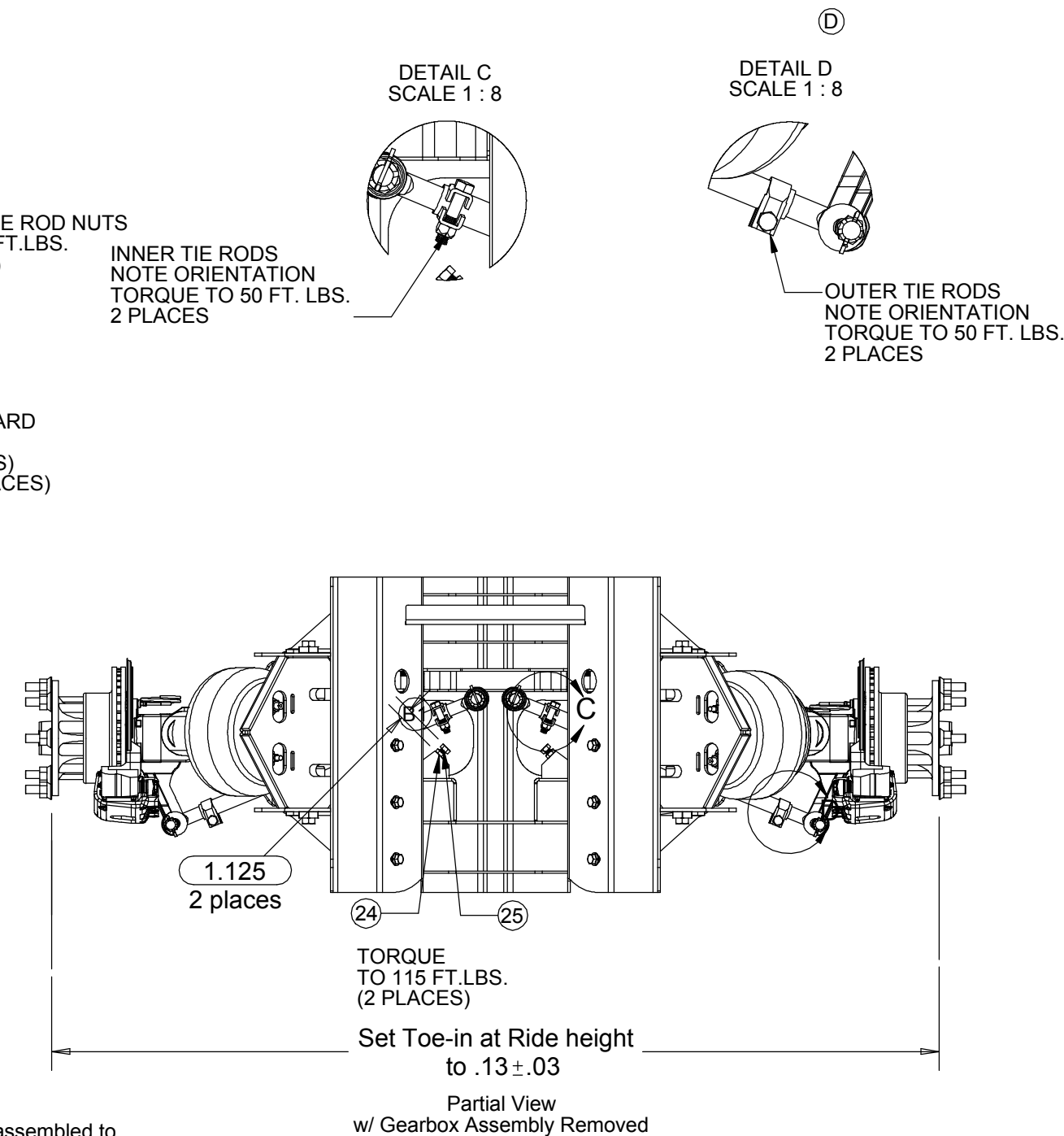


701235

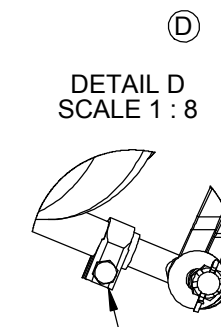
Note:
1. Pivot Bushing Fasteners to be torqued at Ride Height



DETAIL B
SCALE 1 : 4

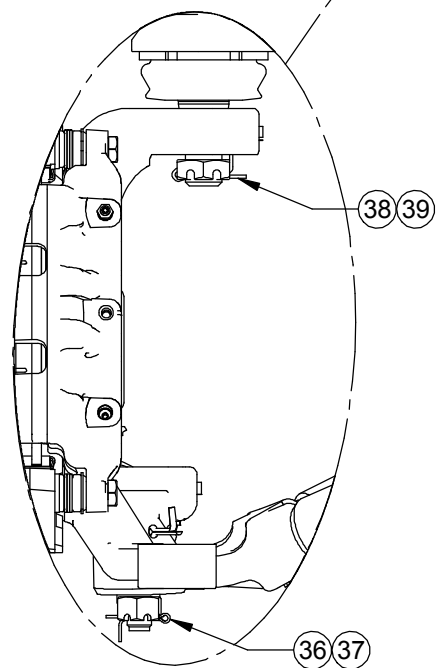
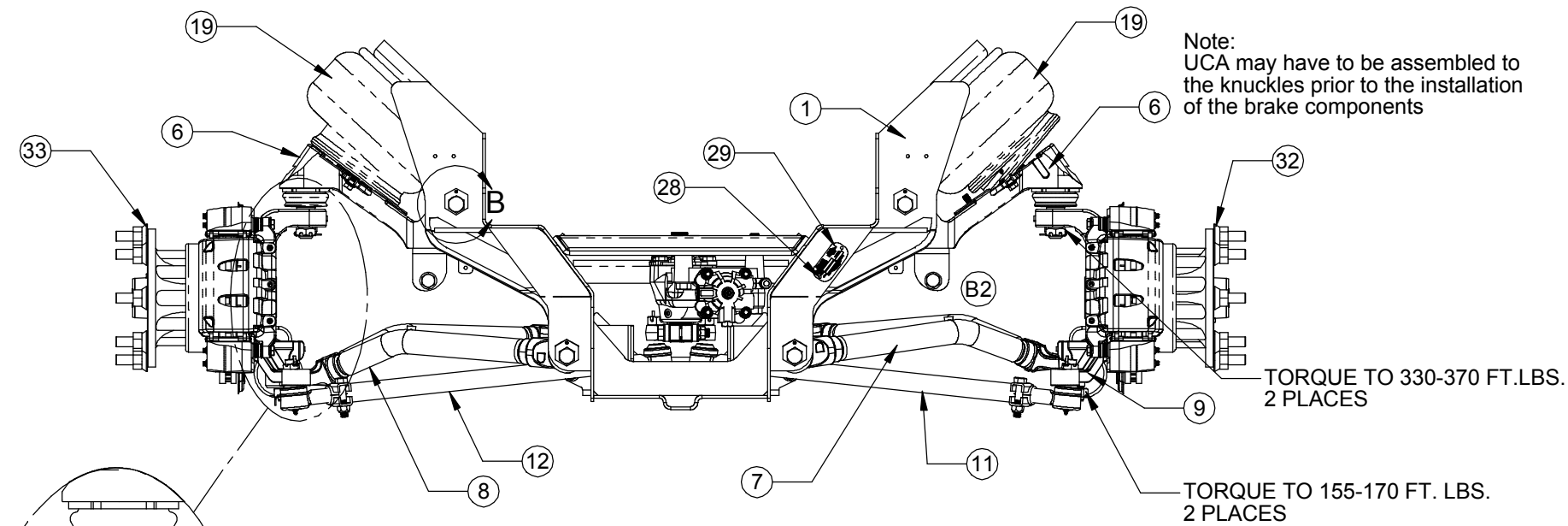


DETAIL C
SCALE 1 : 8



DETAIL D
SCALE 1 : 8

OUTER TIE RODS
NOTE ORIENTATION
TORQUE TO 50 FT. LBS.
2 PLACES

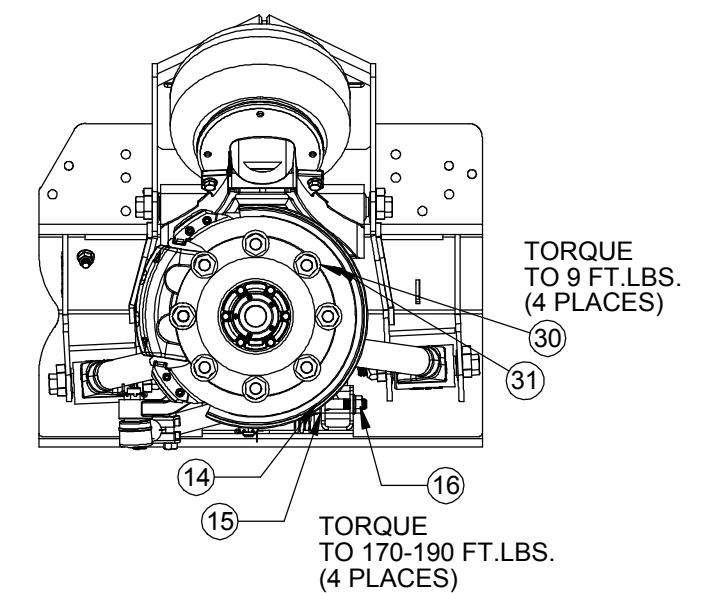


DETAIL E
SCALE 1 : 6
Tie Rod removed for clarity

ITEM NO.	QTY.	PART NO.	DESCRIPTION
1	1	701651-01	CRADLE
2	16	700245-01	Boss, Eccentric
3	8	702593-01	SPACER, ECCENTRIC
4	8	292	HHB 7/8-9 x 8.50, Gr. 8, ZN
5	8	100122-P1	LN 7/8 UNC Stover, Gr. C
6	2	700317-01	ASY, UCA
7	1	702482-01	Asy, LCA, LH
8	1	702482-02	Asy, LCA, RH
9	2	291	HFW 3/4 .781 x 1.375 x .31, ZP
10	1	701836-01	ASY, GEARBOX
11	1	701985-01	ASY, TIE ROD, LH
12	1	701985-02	ASY, TIE ROD, RH
13	2	700178-02	SHOCK ASORBER
14	4	100678-P1	HHB 3/4-10 x 3.5, Gr. 8, ZN
15	6	8131017	FW 3/4" .812 x 1.469 x .134, ZP
16	4	208	LFN 3/4-10, Gr. G, ZN
17	6	184	LFN 5/8-11, Gr. G
18	6	229	FHB 5/8-11 x 1.75, Gr. 8, PH
19	2	700195-01	Asy, Air Spring
20	6	307	FHB 1/2-13 x 1.50, Gr. 8, Zinc
21	2	8103323	SLW 1/2" .523 x .873 x .134, PL
22	2	8120378	N 1/2-13, Gr. 5, ZP
23	2	8219758	JN 3/4-16, Gr. 5, ZP
24	2	100276-P1	JN 5/8 UNC, Gr. 5
25	2	8223511	HHB 5/8-11 x 1.50, Gr. 8, ZN
26	16	293	SSS 10-24 x .38, CONE POINT
27	4	101445-P1	Cotter Pin- 1/8 X 1 1/2
28	2	188	Pop Rivet 1/8" dia. x .525" long
29	1	2617	Plate-Serial No.
30	2	700316-01	BRACKET, SHOCK MOUNT
31	4	315	FHB 3/8-16 x 1, Gr. 8, ZN
32	1	702485-01	Asy, Wheel End, LH
33	1	702485-02	Asy, Wheel End, RH
34	16	701683-03	HFW 7/8"
*35	1	K704287	Kit, Height Control Valve
F1	2	705382-02	Castle Nut, M30 x 1.5
F2	2	705382-03	Cotter Pin, 1.40 x .15 Dia.
F2	2	705383-02	Castle Nut, M24 x 1.5
F2	2	705383-03	Cotter Pin, 1.95 x .24 Dia.
E	-	8098	Tie Strap

*Ship Loose

Partial View
w/ Left Wheel End Assembly Removed



THIS DRAWING IS THE PROPERTY OF TUTHILL CORPORATION, AND IS NOT TO BE USED IN ANY WAY DETRIMENTAL TO ITS INTERESTS. THIS DRAWING IS SUBJECT TO RETURN UPON REQUEST. ALL COPIES OF THIS ELECTRONIC DOCUMENT, WHETHER ELECTRONIC, PRINTED, OR OTHERWISE, ARE UNCONTROLLED DOCUMENTS.

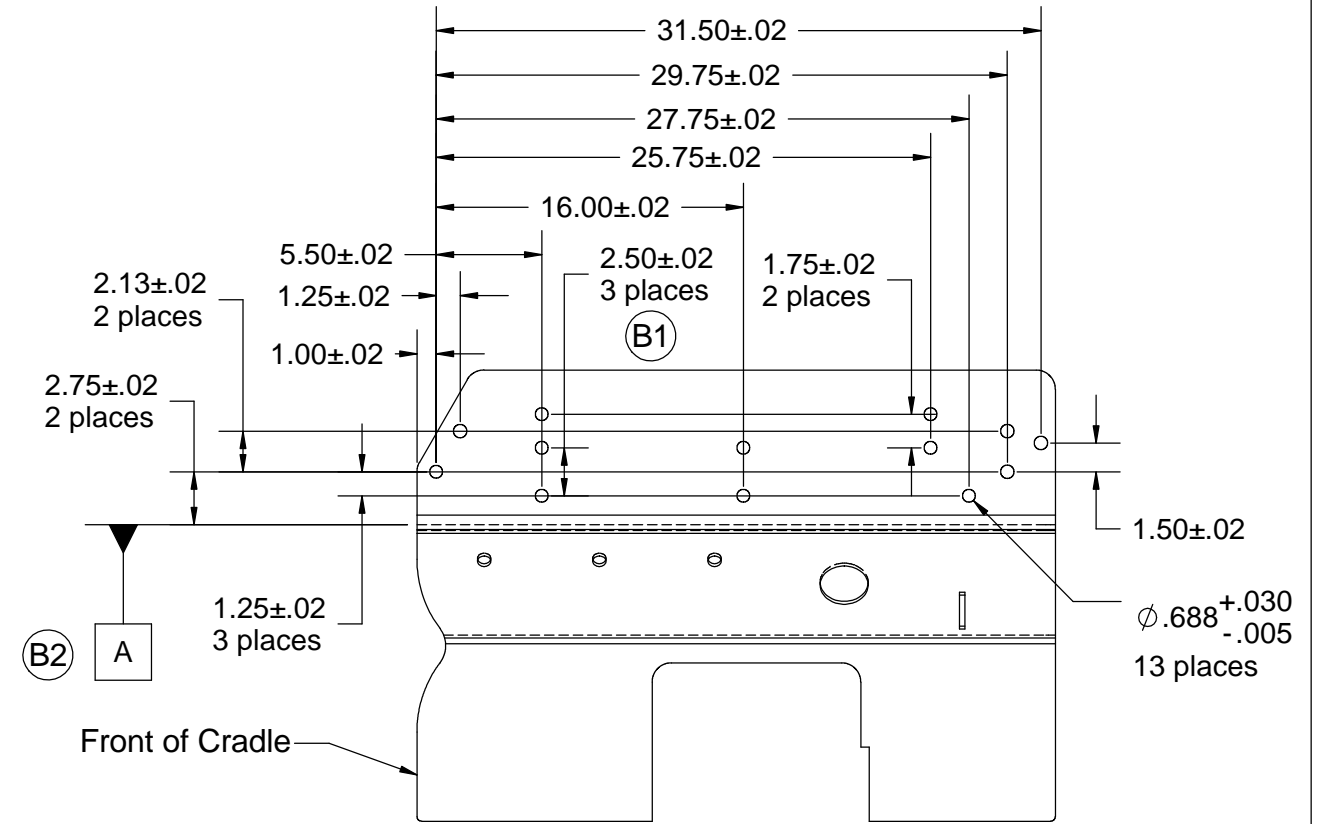
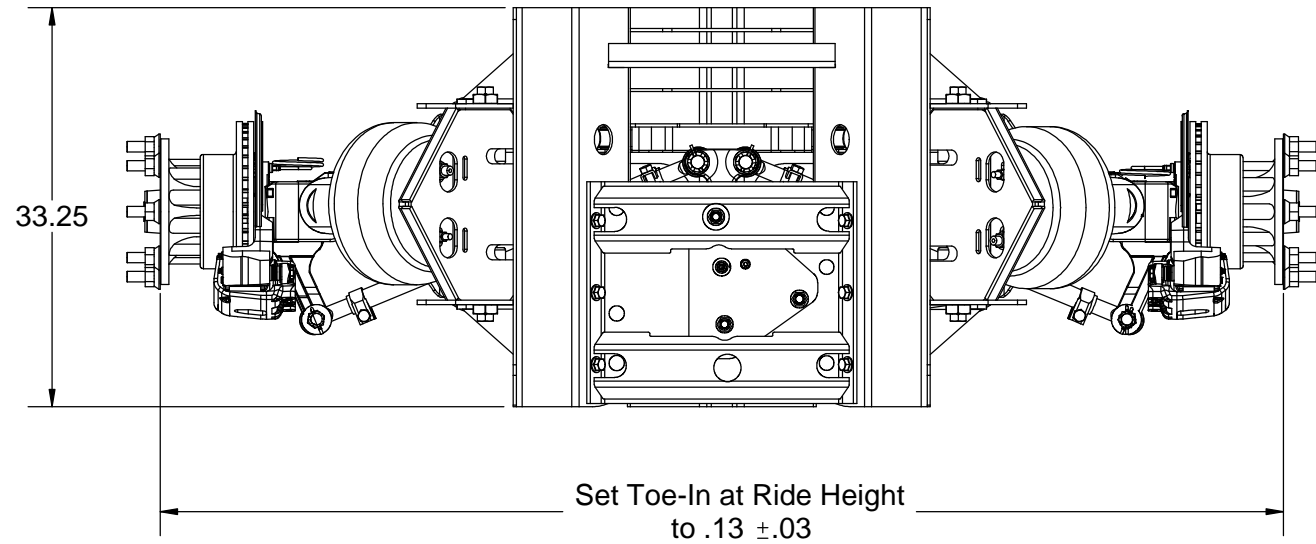
TUTHILL
Transport Technologies

TOLERANCES UNLESS OTHERWISE SPECIFIED:
1 PLACE DECIMAL : ± .1
2 PLACE DECIMAL : ± .06
3 PLACE DECIMAL : ± .030
ANGULAR : ± 1°

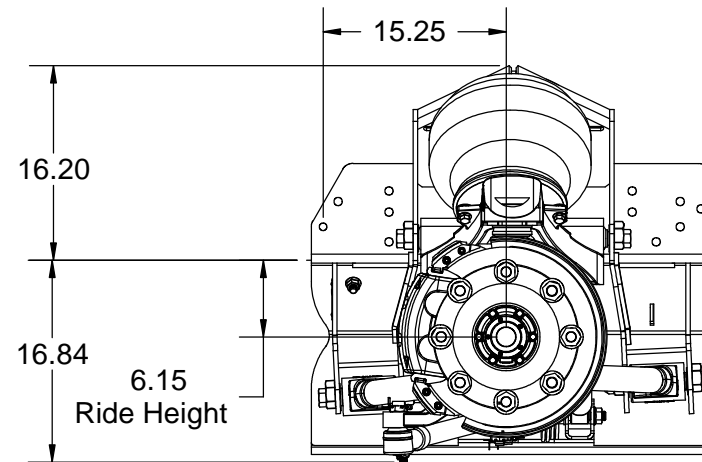
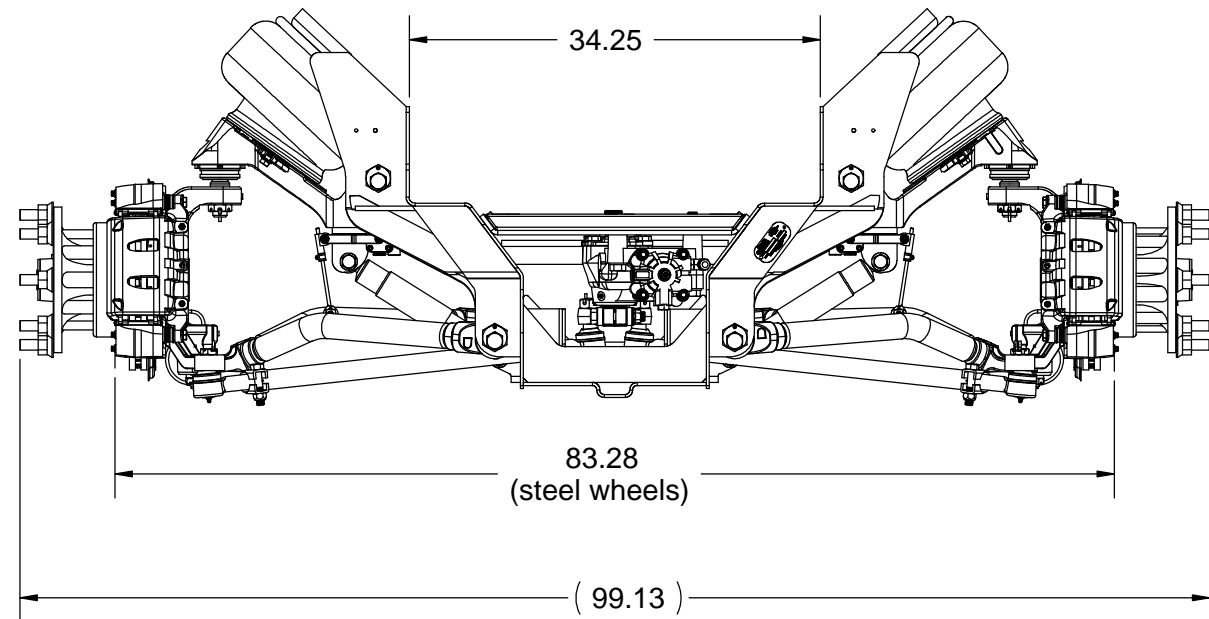
#	Date	Was	Changed To	ECR	By
F2	03/15/05	Added 705383-02, 705383-03		G4417	JMH
F1	03/15/05	Added 705382-02, 705382-03 & Detail E		G4417	JMH
E	02/18/02	Added 8098		G3864	STM
D	09/25/01	Added Detail View C & D		G3728	STM
C	08/23/01	Item #1 Updated		G3695	STM
B2	08/22/01	Rotated LH Upper Shock Mount Correct Direction		G3693	STM
B1	08/22/01	1.569	1.125	G3693	STM
A	08/01/01	Release to Production		G3172	STM

TITLE	MODEL
ASY, IFS850	IFS850
DRAWN BY: STM	DRAWING DATE: 09/27/00
PART NUMBER	DRAWING NO.
701235-01	701235
SCALE: 1=14	ON SIZE C
SHEET 1 OF 1	

701235



Frame Rail Drilling Detail
Scale 1=10



Capacity: 8,500 lbs.
 Jounce: 4 inches
 Rebound: 4 inches
 Allowable Tires: 245/70 R19.5
 Allowable Rim: Accuride 29369A OP (Limited)
 Accuride 28680 (Classic)
 Turn Angle: 50° (inside)

B2	08/23/01	Add Datum A	G3695	STM
B1	08/23/01	2 places	3 places	G3695 STM
A	08/01/01	Release to Production	G3172	STM
#	Date	Was	Changed To	ECR By

THIS DRAWING IS THE PROPERTY OF TUTHILL CORPORATION, AND IS NOT TO BE USED IN ANY WAY DETRIMENTAL TO ITS INTERESTS. THIS DRAWING IS SUBJECT TO RETURN UPON REQUEST. ALL COPIES OF THIS ELECTRONIC DOCUMENT, WHETHER ELECTRONIC, PRINTED, OR OTHERWISE, ARE UNCONTROLLED DOCUMENTS.



TOLERANCES UNLESS OTHERWISE SPECIFIED:	
1 PLACE DECIMAL	:± .1
2 PLACE DECIMAL	:± .06
3 PLACE DECIMAL	:± .030
ANGULAR	:± 1°

TITLE IFS850 Assembly, 8,500 lbs.		MODEL IFS850	
DRAWN BY: STM	DRAWING DATE: 7-31-01	SCALE: 1=16 ON SIZE B	
PART NUMBER 701235-02		DRAWING NO. 701235	SHEET 1 OF 1